

**SUMMEROUR
AND ASSOCIATES
ARCHITECTS
INCORPORATED**
409 Bishop Street
Atlanta, GA 30318
Telephone: 404 . 603 . 8585
Facsimile: 404 . 603 . 8880
10 Sylvan Drive, Suite 29
St. Simons Island, GA 31522
Telephone: 912 . 634 . 6645
Facsimile: 912 . 634 . 9232

859

**LORIDANS
DRIVE**

ATLANTA
GEORGIA

Copyright © 2007
Summerour & Associates Architects, Inc.
All rights reserved.

This drawing is the property of Summerour and Associates and is not to be reproduced or copied in whole or in part, the dimension of which are 24" x 36". It is only to be used for the project and site specifically identified herein and is not to be used on any other project without written permission from the Architect. The Contractor is responsible for verifying all field measurements, quantities, dimensions and related field construction criteria.

Half-Size Plot

Note to Contractor:
Any discrepancies, inconsistencies or ambiguities found between the drawings, specifications & site conditions shall be immediately reported to the architect in writing. The architect will promptly correct the same in writing. Work done by the contractor after discovery of such discrepancies, inconsistencies or ambiguities shall be done at the contractor's risk.

Print Record

16 JUL 2007	CLIENT REVIEW
10 AUG 2007	CLIENT REVIEW
30 AUG 2007	CLIENT REVIEW
18 SEPT 2007	CLIENT REVIEW
11 OCT 2007	PROGRESS FOR MARKETING
3 DEC 2007	PERMIT SET
14 FEB 2008	MARKETING PRINTS

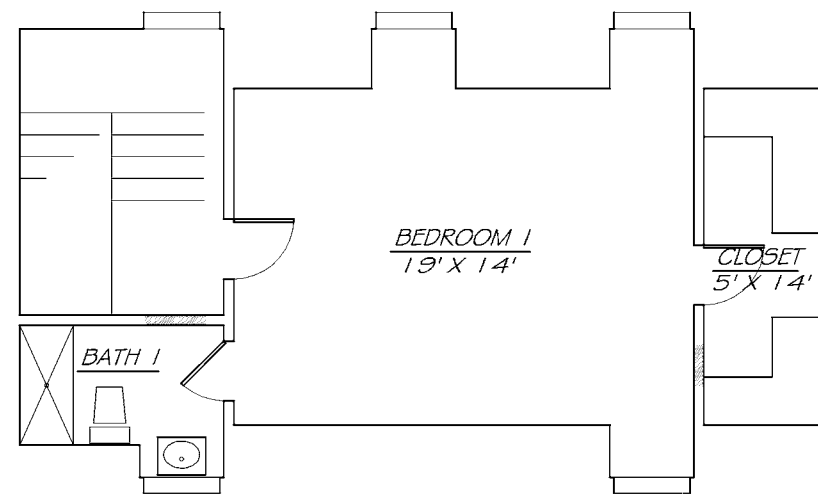
Revisions

Date: JULY 16, 2007
Project#: 0079
Drawn By: J.R.D./C.L.C.
Checked By: C.K.S.

**SECOND
FLOOR
PLAN**

A1.3

Released for Construction
 Not Released for Construction



① **SECOND FLOOR PLAN**
SCALE: 1/4" = 1' - 0"